

# RAINFORD

# NEWSFLASH

April 2024

*Learning and growing together to achieve our best in the love of God*

Our Christian value for this half term is:

'Let us run with *perseverance* the race marked out for us, fixing our eyes on Jesus, the pioneer and perfecter of faith' Hebrews 2:12



PERSEVERANCE

### **A message from Mrs Shawcross**

This half term's value is perseverance in school and as we start our summer term, I always think how pertinent this value is at this time of year. All our children have been working super hard, persevering throughout this year to reach their goals in learning both in school and clubs out of school. We are proud of all our children for having a goal and sometimes just having a go. Learning is a life-long process and developing a great 'can-do' mindset in primary school can set you up for success throughout life. Go Team Rainford! With this in mind, I want to give our Y6 children a special mention. They have worked incredibly hard preparing for their SATs tests, and we would like to thank you for the support that you are giving your child with their homework and revision. There will be a letter sent out next week explaining the week in more detail.

We had our first community clear up of our forest school space last Friday. A big thank you to the volunteers who came along. It has made a huge difference already to the area just by clearing the path of leaves and sticks and cut down branches that were overgrown. There is still a lot to do before we can begin our plans to turn it into an area where children can go during breaktimes. There will be another date advertised soon. We can't do this without the support of our families and hope that more volunteers can get involved in our next event.

By now all our pre-school families should have found out which schools their children will be attending in September. Letters have been sent out to all our new families with arrangements for transition. We are very much looking forward to welcoming our new cohort to CofE in September.

This Friday, the road safety team are in school delivering safety workshops for each year group. They will be taught how to stay safe near roads when they are out and about. There has been an increased concern about the safety of children walking to school in the morning due to the congestion on Linear Bank Close and, on occasions, illegal parking. Please, be considerate when parking cars on the roads around school. It can be stressful for residents when they are blocked in. Thank you for your help in this matter. As a school, we want to work alongside our community.

**Be Ready, Be Respectful, Be Responsible**

# Key Messages

## Parent Questionnaire

A huge thank you to all parents who completed the questionnaire last month. The results are currently being analysed and soon we will produce a parent-friendly results page which will share with you our next steps based on your suggestions. Each and every comment will be taken into consideration.

## Confirmation

Yesterday evening, staff went along to celebrate and support Mrs McVey in her confirmation at St Luke's church. We are very proud of Mrs McVey and were blessed that she wanted her colleagues to be part of this special occasion. As some of you know, Mrs McVey hides away from the camera but we managed to capture this special moment...



## School Office

Please note the school office opening hours are 8.30 am - 4.30 pm Monday to Friday. The office staff will not be available outside of these hours.

## Knowledge Organisers

These have been shared on ClassDojo. Each one is a summary of the key facts and essential knowledge your child is being taught in each subject. Please share with your child to support their learning.

## 400 Dojo Winners!!!

Film afternoon for children who have gained 400 dojos will take place on Friday 10th May. You still have a week to get there!!

## Raising Money for Hajarrah

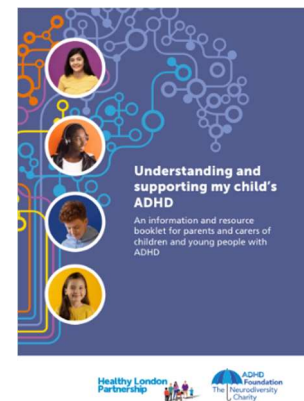
Our Trust Charity is New Hope School in Uganda. Schools throughout our trust sponsor child who attend this school, Our child is Hajarrah. In June, we are planning to host a 'toy bring and buy' sale. This is where your child can bring in any unwanted toys to school to raise money for our sponsored child- Hajarrah. We plan to fill the hall with second-hand toys on **Wednesday 5th June** during the afternoon and after school. Children can come along and buy a toy for a small cost. I am looking forward to seeing parents faces as children leave with huge pre-loved teddy bears!



**Be Ready, Be Respectful, Be Responsible**

# Neurodiversity Assembly

Last week, Mrs Bradshaw, our SENDCo delivered an assembly about what it means to be neurodiverse and have a condition such as ADHD, autism, dyslexia, dyspraxia, dyscalculia or tourette syndrome. We celebrated all of the strengths and talents of people who are neurodiverse and learn how life might be challenging or difficult for them sometimes. We are committed to making our school a safe, nurturing, welcoming and exciting place, in which all neurodiverse learners can achieve their academic potential. This year we have embarked on the journey to become an **ADHD friendly school**. One of the pledges we have made as a school to achieve this award is to provide information and support for parents and carers of children and young people with ADHD. This information will be added to newsletters in the next coming months.



[https://www.adhdfoundation.org.uk/wp-content/uploads/2023/02/ADHD\\_ParentPrimaryCareBooklet\\_London.pdf](https://www.adhdfoundation.org.uk/wp-content/uploads/2023/02/ADHD_ParentPrimaryCareBooklet_London.pdf)

## Guinea Pigs



The hygiene and safety aspects for the guinea pigs and children are very important to us. The school have completed a risk assessment for looking after our pigs and what to do in case of an injury. This includes the following:

- Children and adults wash their hands thoroughly before and after handling
- Guinea Pigs can bite when handled. It is important that children are taught to handle the guinea pigs gently to avoid stressing them.
- The cage/pen/hutch must be kept clean at all times.
- Make sure the guinea pig is secure and cannot escape.

We are asking you to inform us, by completing a form on school spider if you are happy for your child to be chosen for guinea pig club.



Follow us on:

Facebook: Rainford C E Primary School X: @CERainford



Be Ready, Be Respectful, Be Responsible

Mental Health Support Team

# WELLBEING WEBINARS

**NHS**  
**Mersey Care**  
NHS Foundation Trust

Your MHST is running a series of webinars one Friday a month on a number of topics relating to mental health and wellbeing.

## TOPICS AND DATES

- Worry Management - 19 January
- Parenting for Anxiety - 23 February
- Low Mood - 22 March
- Neurodiversity - 26 April
- Parent Skills for Behaviour - 17 May
- LGBTQ+ - 21 June
- Emotional Regulation - 19 July



### WHEN

4pm to 4:45pm



### WHERE

Zoom

(link will be emailed)



To register please email which webinar you want to attend to [events@merseycare.nhs.uk](mailto:events@merseycare.nhs.uk)






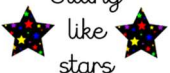
Webinars will be recorded.  
No chat function will be available for safety purposes.

## What is the ExSEL Programme?

We are taking part in the ExSEL program! (Evidence informed Social and Emotional Learning). This is run by Barnardos. Children have had their first workshop and the second one is on the 8<sup>th</sup> May!

The ExSEL programme is a universal Social Emotional Learning (SEL) programme developed by SEL specialists at Barnardo's, and it aims to teach children, from year 1 – year 6, the core SEL competencies as defined by CASEL, the Collaborative for Academic, Social and Emotional Learning. The workshops have been developed using specialist knowledge of SEL and are delivered by Barnardo's coaches. Using resources that are tailor-made for the workshops, children are taught different SEL skills each session, and teachers are encouraged to continue developing these skills regularly in between sessions.

**Be Ready, Be Respectful, Be Responsible**

The Code	Level 1	Level 2	Level 3
<p style="text-align: center;">Rainford CE Primary School CODE OF CONDUCT</p> <div style="display: flex; justify-content: space-between;"> <div style="border: 1px solid black; padding: 5px; width: 45%;"> <p>Always try your best and never give up</p> </div>  </div> <div style="border: 1px solid black; padding: 5px; width: 100%; text-align: center;"> <p><b>Respect</b> each other and each others' belongings</p> </div> <div style="display: flex; justify-content: space-around;"> <div style="border: 1px solid black; padding: 5px; width: 45%;"> <p>Be honest</p>  </div> <div style="border: 1px solid black; padding: 5px; width: 45%;"> <p>Encourage one another</p>  </div> </div> <div style="display: flex; justify-content: space-around;"> <div style="border: 1px solid black; padding: 5px; width: 45%;"> <p>Wonderful walking</p>  </div> <div style="border: 1px solid black; padding: 5px; width: 45%;"> <p>Find the joy</p>  </div> </div> <div style="border: 1px solid black; padding: 5px; width: 45%; margin: 0 auto;"> <p>Sitting like stars</p>  </div>	<p>Talking in the line Talking over the teacher Tapping equipment Drawing on whiteboards Not sitting like STARS Not wonderful walking Bringing toys/sweets into school 'Play fighting' Getting out of seat during lessons</p>	<p><i>Second instance of not following the rules or a serious incident such as:</i></p> <p>Ignoring an adult's instruction Not lining up when the whistle is blown Pushing in the line Coming into school unattended Unkind name calling Mobile phones out on the yard Using technology inappropriately</p>	<p><i>Third instance of not following the rules or a very serious incident such as:</i></p> <p>Hitting/ kicking/ punching/ biting Climbing on furniture or equipment outside/ out of windows Swearing Spitting Any racism, sexism, homophobic comments or bullying Violation of privacy (in the toilets) Stealing Fighting/ barging into one another Vandalism Damaging school property Damaging others' work Inappropriate online behaviour</p>
<p>Following the school's rules at all times will help you to learn in every lesson and to earn all of our wonderful rewards!</p>	<p>A verbal warning</p>	<p>Miss 15 minutes of the next playtime</p>	<p>Miss 15 minutes of the next <b>two</b> playtimes</p> <p>A letter of concern home to parents/carers explaining the incident. Letter uploaded to school monitoring files</p> <p>Three letters of concern in one half term will result in a meeting with parents/carers</p>
<p><i>(not including Reception or Y1 - consequence given appropriate to their age/ development)</i></p>			

Notes:

- Incidents involving outdoor equipment will result in a ban if using that equipment e.g. football, pogo stick, table tennis
- Children with additional needs may have their own behaviour plan that will use the above in an adapted way.

**Be Ready, Be Respectful, Be Responsible**

# Upcoming Dates

**1<sup>st</sup> May 2024**

SAT Mental Health Workshop for Y6

**3<sup>rd</sup> May 2024**

Road Safety Workshops- Whole school

**6<sup>th</sup> May 2024**

School closed for May Day Bank Holiday

**7<sup>th</sup> May 2024**

PTA F.O.R.C.E.S meeting at The Derby  
Arms

**8<sup>th</sup> May 2024**

Experience Pentecost  
ExSEL Workshops

**15<sup>th</sup> May 2024**

Bible Tales for EYFS-Y3

**10<sup>th</sup> May 2024**

1<sup>st</sup> birthday of Booty Scooty, Lavendar,  
Sugar and Barbara

**13<sup>th</sup> May 2024-16<sup>th</sup> May 2024**

KS2 SATS Week

**20<sup>th</sup> May 2024**

KS1 Infant Sports Day  
(Weather Permitting)

**21<sup>st</sup> May 2024**

Raindrops and Reception Sports Day  
(Weather Permitting)

**22<sup>nd</sup> May 2024**

KS2 Sports Day  
(Weather Permitting)

**22<sup>nd</sup> May 2024**

Reception vision tests

**23<sup>rd</sup> May 2024**

Raindrops Stay and Play  
Alton Towers for Y6

**Be Ready, Be Respectful, Be Responsible**